

# High Pressure Ball Valves - KHB2

Remove Watermark Now

## 2-Way Carbon Steel

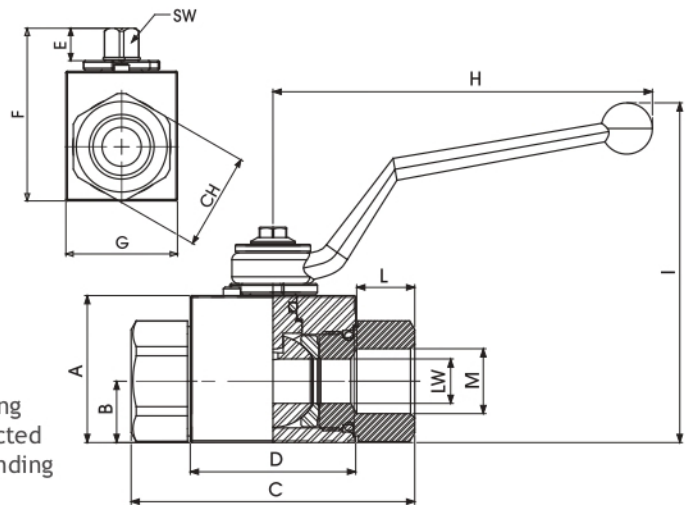
## Standard



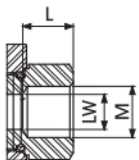
PN up to 500 bar  
DN up to 50

### Specifications

- Type: ball valve KHB 2way
- Body: block
- Material : 1,0737
- Ball seats: from DN4 up to DN25
- O-Rings: NBR, FKM, EPDM, MVQ
- Operating pressure: 500 Bar depending on valve size and seal materials selected
- Temp. range: -10°C to +100°C depending on seal material selected



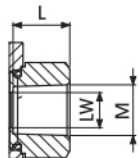
### KHB2 DIN ISO 228 BSP Standard



DIN ISO 228

TYPE	PN	DN	A	B	C	D	E	F	G	H	I	L	M	CH	SW	LW	WEIGHT Kg
KHB2 G 1/8"	500 Bar	4	35	14	71	42	11	49	30	110	91	11	G 1/8	24	9	4	0,512
KHB2 G 1/4"	500 Bar	6	35	14	71	42	11	49	30	110	91	15,5	G 1/4	24	9	6	0,497
KHB2 G 3/8"	500 Bar	10	40	17	73	44	11	54,25	35	110	96	15,5	G 3/8	30	9	10	0,652
KHB2 G 1/2"	500 Bar	13	43	18	83	48	11	57	37	110	99	17	G 1/2	32	9	13	0,77
KHB2 G 3/4"	400 Bar	20	55	23	95	62	14	73,5	45	180	106	21	G 3/4	41	14	20	1,46
KHB2 G 1"	350 Bar	25	65	29	112	66	14	83,5	55	180	116	24	G 1"	50	14	25	2,23
KHB2 G 1" 1/4 R	350 Bar	25	65	29	120	66	14	83,5	55	180	116	24	G 1"1/4	55	14	25	2,299
KHB2 G 1" 1/2 R	350 Bar	25	65	29	124	66	14	83,5	55	180	116	24	G 1"1/2	60	14	25	2,413
KHB2 G 1" 1/4	350 Bar	85	85	37	110	83	17	103	75	305	145	13	G 1"1/4	65	17	32	4,140
KHB2 G 1" 1/2	350 Bar	96	95	42	130	91	17	114	85	305	155	19	G 1"1/2	70	17	38	5,540
KHB2 G 2"	350 Bar	112	113	52	140	100	17	131	110	305	173	19	G 2"	85	17	50	8,580

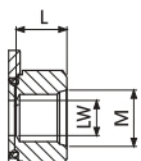
### KHB2 ANSI/ASME B1.20.1 NPT Standard



ANSI/ASME B1.20.1

TYPE	PN	DN	A	B	C	D	E	F	G	H	I	L	M	CH	SW	LW	WEIGHT Kg
KHB2 N 1/8"	500 Bar	4	35	14	71	42	11	49	30	110	91	11	N 1/8	24	9	4	0,512
KHB2 N 1/4"	500 Bar	6	35	14	71	42	11	49	30	110	91	17	N 1/4	24	9	6	0,5
KHB2 N 3/8"	500 Bar	10	40	17	73	44	11	54,25	35	110	96	17	N 3/8	30	9	10	0,655
KHB2 N 1/2"	500 Bar	13	43	18	83	48	11	57	37	110	99	21	N 1/2	32	9	13	0,771
KHB2 N 3/4"	400 Bar	20	55	23	95	62	14	73,5	45	180	106	21	N 3/4	41	14	20	1,478
KHB2 N 1"	350 Bar	25	65	29	112	66	14	83,5	55	180	116	24	N 1"	50	14	25	2,279
KHB2 N 1" 1/4 R	350 Bar	25	65	29	120	66	14	83,5	55	180	116	24	N 1"1/4	55	14	25	2,351
KHB2 N 1" 1/2 R	350 Bar	25	65	29	124	66	14	83,5	55	180	116	24	N 1"1/2	60	14	25	2,482
KHB2 N 1" 1/4	350 Bar	85	85	37	110	83	17	103	75	305	145	13	G 1"1/4	65	17	32	4,140
KHB2 N 1" 1/2	350 Bar	96	95	42	130	91	17	114	85	305	155	19	G 1"1/2	70	17	38	5,540
KHB2 N 2"	350 Bar	112	113	52	140	100	17	131	110	305	173	19	G 2"	85	17	50	8,580

### KHB2 SAE J1926-1 Standard



SAE J1926-1

TYPE	PN	DN	A	B	C	D	E	F	G	H	I	L	M	CH	SW	LW	WEIGHT Kg
KHB2 SAE4	500 Bar	6	35	14	71	42	11	49	30	110	91	15,5	7/16 UNF	24	9	6	0,504
KHB2 SAE6	500 Bar	10	40	17	73	44	11	54,25	35	110	96	16	9/16 UNF	30	9	10	0,663
KHB2 SAE8	500 Bar	13	43	18	83	48	11	57	37	110	99	17,5	3/4 UNF	32	9	13	0,779
KHB2 SAE12	400 Bar	20	55	23	95	62	14	73,5	45	180	106	23	1"1/16 UN	41	14	20	1,441
KHB2 SAE16	350 Bar	25	65	29	112	66	14	83,5	55	180	116	23	1"5/16 UN	50	14	25	2,335
KHB2 SAE20R	350 Bar	25	65	29	120	66	14	83,5	55	180	116	23	1"5/8 UN	55	14	25	2,307
KHB2 SAE24R	350 Bar	25	65	29	124	66	14	83,5	55	180	116	23	1"7/8 UN	60	14	25	2,399
KHB2 SAE 1" 1/4	350 Bar	85	85	37	110	83	17	103	75	305	145	13	G 1"1/4	65	17	32	4,140
KHB2 SAE 1" 1/2	350 Bar	96	95	42	130	91	17	114	85	305	155	19	G 1"1/2	70	17	38	5,540
KHB2 SAE 2"	350 Bar	112	113	52	140	100	17	131	110	305	173	19	G 2"	85	17	50	8,580